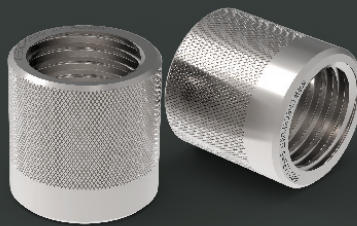


# Checkthread®

Checkthread® is a kit designed to monitor wheel stud quality, stud hole integrity and to determine the correct nut type.

MAINTENANCE



OPTIMISED  
ACCESSORIES  
& NEW  
PRODUCT  
CODE



# Checkthread®

**Product:** Checkthread®  
**Product Code:** CTK

OPTIMISED  
ACCESSORIES  
& NEW  
PRODUCT  
CODE

**Function:** The Checkthread® kit highlights any potential problems with studs which cannot be identified visually. In which case any damaged studs should be replaced. The kit consists of thread testers, stud hole elongation tester and conical/spherical tester.

Thread tester facilitates monitoring of wheel stud quality by highlighting any damages to threads.

Stud hole elongation tester (SHET) identifies any elongation of stud holes.

Conical/spherical tester determines the correct nut type to be used with a wheel.

**Material:** Thread testers: high quality premium stainless steel.

Stud hole elongation and conical/spherical testers: glass filled nylon.

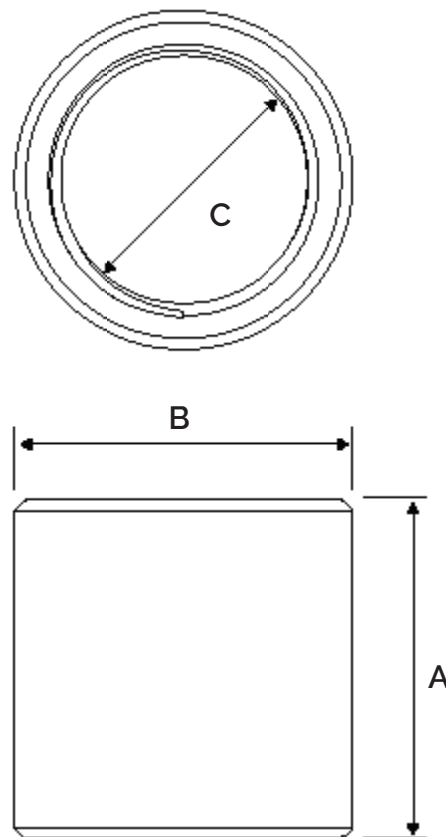
**Application:** In garages and workshops as a preventative maintenance measure before attaching the wheel.

**Main benefits:** Indicates any damage, stretching or corrosion on wheel studs to help determine whether the studs need replacing.

Replacing damaged studs helps prevent studs from shearing and reduces the likelihood of wheel loss.

**Sizes:** Thread testers: M18, M20, M22, Scania and Volvo standard thread sizes.

Stud hole elongation tester: 21, 24, 26, 31, 32, 33 mm.

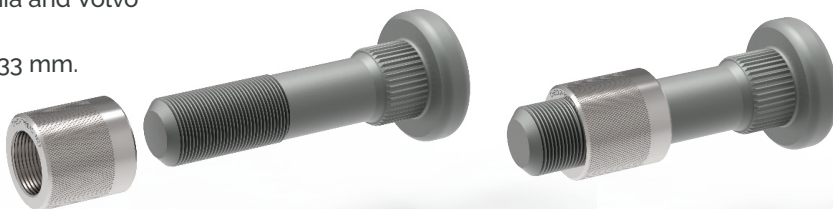


## Specifications

A = 30 mm

B = 30 mm

C = 22 mm



**GLOBAL LEADERS  
IN WHEEL SAFETY**

Tel: +44 (0)1524 271 200  
info@checkpoint-safety.com  
www.checkpoint-safety.com

**Checkpoint®**  
THE ORIGINAL AND THE BEST